



Independence, Inc. Equipment Loan Program

The Equipment Loan Program provides loans and donations of recycled durable medical equipment at low or no cost to the public. Each item has a suggested donation amount, but no one is turned away because of lack of ability to pay. We regret that delivery is not available.

We are only able to accept donated equipment that is clean and in proper working condition, as we are unable to have equipment repaired.

Accepted Items

- 1.) Manual Wheelchairs & Transport Chairs
- 2.) Walkers
- 3.) Rollators (4 or 3 wheeled walkers)
- 4.) Rolling Knee Walkers/Leg Scooters
- 5.) Underarm & Forearm Crutches
- 6.) Commodes
- 7.) Shower Commode Chairs
- 8.) Toilet Seat Risers
- 9.) Toilet Arm Supports/Safety Rails
- 10.) Bathtub Safety Rails
- 11.) Bed Safety Rails/Bed Canes
- 12.) Hospital Bed Table
- 13.) Transfer Boards
- 14.) Reachers/Grabbers
- 15.) Sock/Stocking Aids
- 16.) Leg Lifter
- 17.) Blood Pressure Monitors
- 18.) Canes (regular, quad, folding, white [for visually impaired])
- 19.) Shower Chairs & Bath/Transfer Benches
- 20.) Grab Bars
- 21.) Shower Extension Hoses
- 22.) Portable Wheelchair Ramps
- 23.) Orthopedic/Wedge Pillows & Leg Spacers
- 24.) Latex/Vinyl Disposable Gloves
- 25.) Disposable Incontinence Underpads ("Chux")
- 26.) Adult Disposable Briefs of any size ("Depends")
- 27.) Assistive Technology Devices such as: video magnifiers or CCTVs, adaptive cooking devices, adaptive eating utensils, magnifiers/magnifying glasses, talking clocks/wristwatches, etc.

Equipment we are unable to accept

Dirty, stained, torn, damaged or non-working items	Electric Wheelchairs*
Hospital Beds*	Electric Scooters*
Lift Chairs*	CPAP or BiPAP Machines
Standing Frames*	Oxygen Concentrators
Hoyer Lifts*	Nebulizers

**Refer to Kansas Equipment Exchange (KEE) to donate these types of items: 785-233-4572*

Examples of items we accept into our Equipment Loan Bank:

1.) Manual Wheelchairs & Transport Chairs



2.) Standard Walkers



3.) Rollators (3-4 wheeled walkers with hand brakes)



4.) Rolling Knee Walkers/Leg Scooters



5.) Underarm & Forearm Crutches



6.) Commodes



7.) Shower Commode Chairs



8.) Toilet Seat Risers



9.) Toilet Arm Supports/Safety Rails



10.) Bathtub Safety Rails



11.) Bed Safety Rails/Bed Canes



12.) Hospital Bedside Table



13.) Transfer Boards



14.) Reachers/Grabbers



15.) Sock/Stocking Aids



16.) Leg Lifter



17.) Blood Pressure Monitors



18.) Canes (regular, quad, folding, white [for visually impaired])



19.) Shower Chairs & Bath/Transfer Benches



20.) Grab Bars



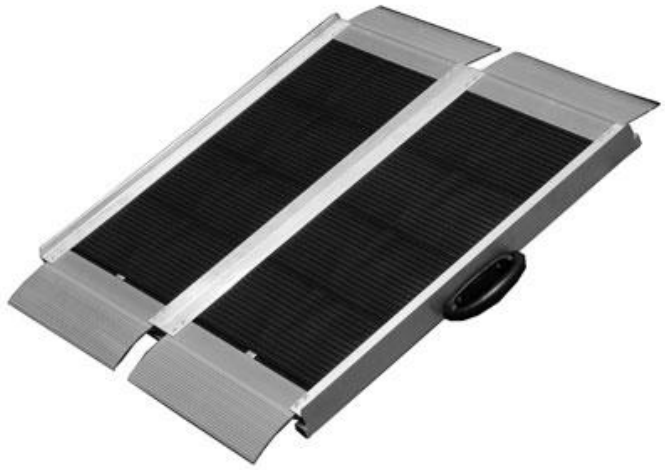
21.) Shower Extension Hoses



22.) Portable Wheelchair Ramps







23.) Orthopedic/Wedge Pillows & Leg Spacers



24.) Latex/Vinyl Disposable Gloves



25.) Disposable Incontinence Underpads (“Chux”)



26.) Adult Disposable Briefs of any size (“Depends”)



27.) Assistive Technology Devices such as: video magnifiers or CCTVs, adaptive cooking devices, adaptive eating utensils, magnifiers/magnifying glasses, talking clocks/wristwatches, etc.

